

Hopper Road

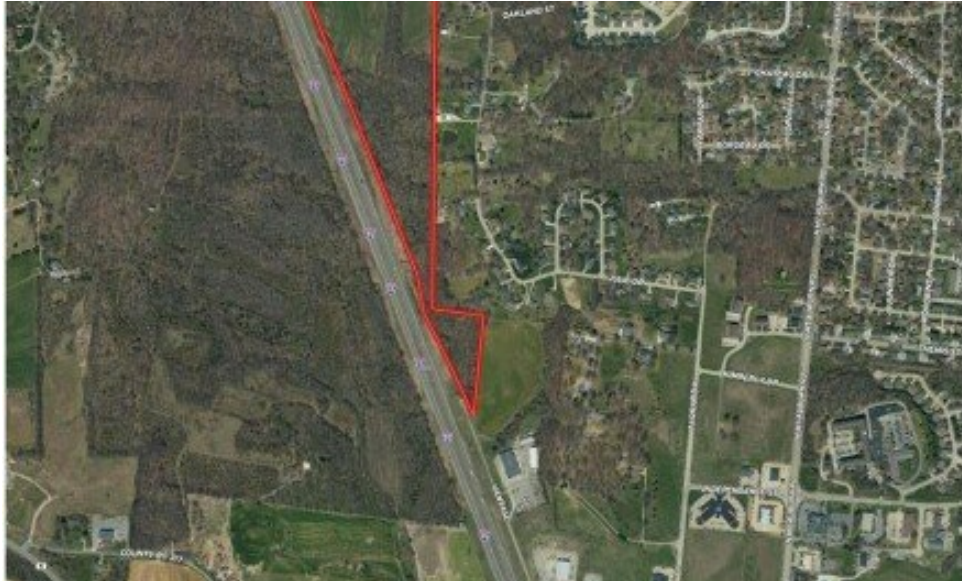
Cape Girardeau, MO 63701



LOGO COMING SOON

Powered by www.semohousehunter.com

MLS# 25007797



\$2,006,400

Located in the heart of Cape Girardeau, this exceptional piece of property spans approximately 43.48 acres (m/l) with direct access to Hopper Road to the north and Vantage Drive to the south. This prime location offers excellent visibility along Interstate 55, making it an ideal site for future development. Approximately half of the property is currently zoned R3, with the remainder zoned R1. A significant portion of the land is open pasture, providing a fantastic foundation for various development opportunities. With utilities nearby and ample potential for growth, the possibilities are endless. Just minutes away from the many amenities that Cape Girardeau has to offer, this location is perfectly positioned for commercial or residential development. Note: Acreage may be subject to change based on a new survey.



Devin Hoehn
Phone: (573) 846-8145

AgriBuck Properties
Office: (573) 513-5701

For full listing details, please scan:

