

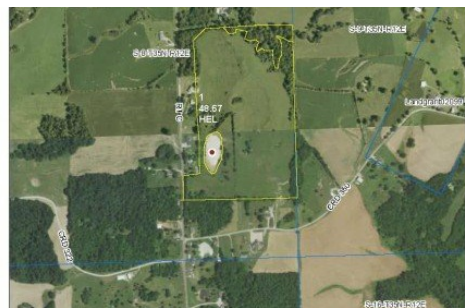
**Hwy C & Pcr 350**  
Perryville, MO 63775



**LOGO** COMING  
SOON

Powered by [www.semohousehunter.com](http://www.semohousehunter.com)

**MLS# 25030870**



**\$1**

An exceptional opportunity awaits with this 55.2-acre (more or less) property located near Crosstown, Missouri, in the Perry County District 32 School District. Selling via online auction only, ending on June 17th at 6:00 PM, this versatile tract offers highway frontage on both PCR 350 and Hwy C. The land features electric service on-site, excellent building locations, and a pond, making it ideal for a variety of uses. Currently operating as a turn-key cattle farm, the entire property is fully fenced and will be sold free and clear of any leases. Whether you're seeking a secluded site for your dream home or a ready-to-go agricultural investment, this property delivers both privacy and potential.



**Kyle Lorenz**  
Phone: (573) 513-5701

**AgriBuck Properties**  
Office: (573) 513-5701

For full listing details, please scan:

