

**1800 Silverthorne Trail**  
Cape Girardeau, MO 63701



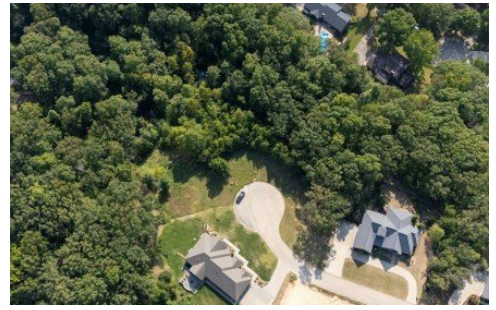
**LOGO** COMING  
SOON

Powered by [www.semohousehunter.com](http://www.semohousehunter.com)

**MLS# MIS25062638**



s Are Approximate\*



**\$29,000**

Discover the perfect spot to build your dream home on this private 1-acre lot located within Cape Girardeau city limits. Nestled in a secluded neighborhood with only one way in and out, this property offers peace and privacy while still being just a minute from all the conveniences of town. This tree-lined property makes it ideal for a walk-out floor plan, right in the center of the cul de sac, access is simple and welcoming. A rare opportunity to enjoy both tranquility and convenience in one location!



**Ashley Cross**  
Phone: (573) 421-0151

**EPM Real Estate**  
Office: (573) 332-8100

For full listing details, please scan:

