

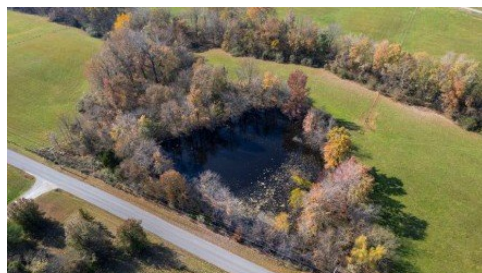
3065 County Road 638 Tract 2
Cape Girardeau, MO 63701



LOGO COMING
SOON

Powered by www.semohousehunter.com

MLS# MIS25080226



\$350,000

What a rare opportunity to own smaller acreage in Cape Girardeau County. Just minutes from town and located within the Jackson School District, this property sits proudly on the corner of two county roads and offers nearly 1,500 feet of paved frontage. The beautiful rolling pasture, previously utilized for horses, is already fenced with woven wire and opens the door to a variety of uses whether you're dreaming of a private homesite, a hobby farm, or considering development potential. Deer, turkey, bald eagles, and other wildlife are frequent visitors, making this a scenic and serene setting to enjoy. Additional acreage available; MLS 25080234



Terri Penrod
Phone: (573) 450-1920

EDGE Realty ERA Powered
Office: (573) 335-8111

For full listing details, please scan:

