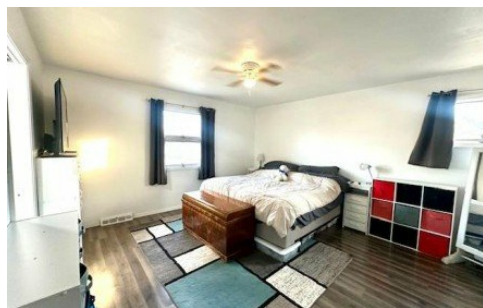


229 S West End Boulevard
Cape Girardeau, MO 63703

CENTURY 21
Ashland Realty

Powered by www.semohousehunter.com

MLS# MIS26000841



\$199,900

3 Bedrooms | 3 Bathrooms | 2,488 Sqft

Spacious brick raised ranch offering nearly 2,500 sq ft of living space with a thoughtfully designed and inviting layout. The main level features a large open living area that flows seamlessly into the dining room with built-in cabinetry, connecting to a well-appointed kitchen with stainless steel appliances and an eat-in breakfast area ideal for everyday living and entertaining. Enjoy natural light and fresh air from the Juliet balcony off the front, while the covered back porch provides a comfortable space to relax or host guests. The home includes three bedrooms and two-and-a-half bathrooms, offering both comfort and functionality. The finished basement adds a generous secondary living area along with a versatile bonus room suitable for a home office, man cave, hobby space, or additional sleeping area. A large climate-controlled storage area off the garage provides exceptional storage and year-round convenience. Well-maintained with flexible living spaces and timeless appeal, this home offers comfort, style, and room to grow.



Tara Newell-Koehler
Phone: (573) 275-0139

Century 21 Ashland Realty
Office: (573) 334-2121

For full listing details, please scan:

