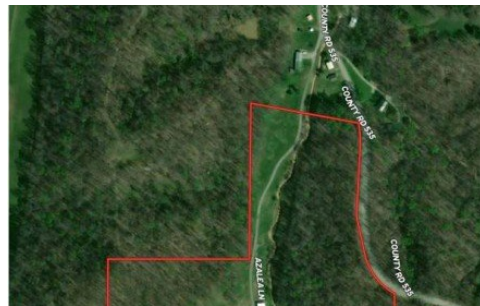


Off Pcr 535 County Road 535
Jackson, MO 63755

 **LOGO** COMING
SOON

Powered by www.semohousehunter.com

MLS# MIS26003293



\$164,000

Discover the perfect blend of privacy, versatility, and location with this 16.4-acre tract in northern Cape Girardeau County. Tucked away in a peaceful, quiet setting, this property is ideal for those looking to escape the hustle while still enjoying nearby outdoor amenities, including close proximity to the river and the Apple Creek Shooting Range. Electric runs through the property, making it well-suited for building a dream home, weekend cabin, or mini farm. The land also offers excellent potential for running cattle, and a recently built cattle barn is already in place and included with the property saving you time and expense. Located in the Jackson School District, this versatile acreage offers a rare opportunity to create the lifestyle you've been looking for, whether that's full-time country living, recreation, or agricultural use.



Devin Hoehn
Phone: (573) 846-8145

AgriBuck Properties
Office: (573) 513-5701

For full listing details, please scan:

