

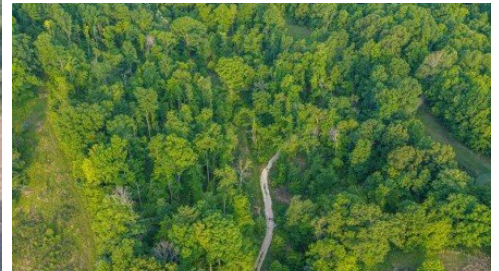
000 County Road 606
Cape Girardeau, MO 63701



LOGO COMING
SOON

Powered by www.semohousehunter.com

MLS# MIS26027905



\$292,500

Discover the perfect balance of seclusion and convenience on this stunning 50-acre timber tract in Cape Girardeau County. For the hunter or outdoorsman who understands that the best land is also the best investment, this tract is a rare find. Tucked into the hills of Oriole, Missouri, this property sits just over the ridge from the Mississippi River and Trail of Tears State Park, placing you in one of the most productive wildlife corridors in the region. Whether you're chasing trophy longbeards in the spring or waiting on a heavy-racked buck in November, this ground is a proven producer. This isn't just a patch of woods; it's a high-quality stand of tall timber. From a sportsman's perspective, these hardwoods provide a massive mast crop to keep game on the property year-round. From an investor's perspective, the standing timber represents significant "banked" value that continues to grow alongside the land's natural appreciation. Whether you're looking for a weekend escape or a permanent residence, you are only 20-25 minutes from the heart of Cape Girardeau. This land is a sportsman's stronghold, boasting heavy timber cover and wet-weather creeks that serve as a natural travel corridor for trophy whitetail deer and wild turkey. Enjoy an interior trail already in place to allow for more time in the stand. Beyond your own borders, you'll enjoy nearby



Andy Ogle
Phone: (865) 755-5854

Midwest Land Group LLC
Office: (913) 674-8010

For full listing details, please scan:

